



Photo Courtesy of Bob Davis

Inside this issue:

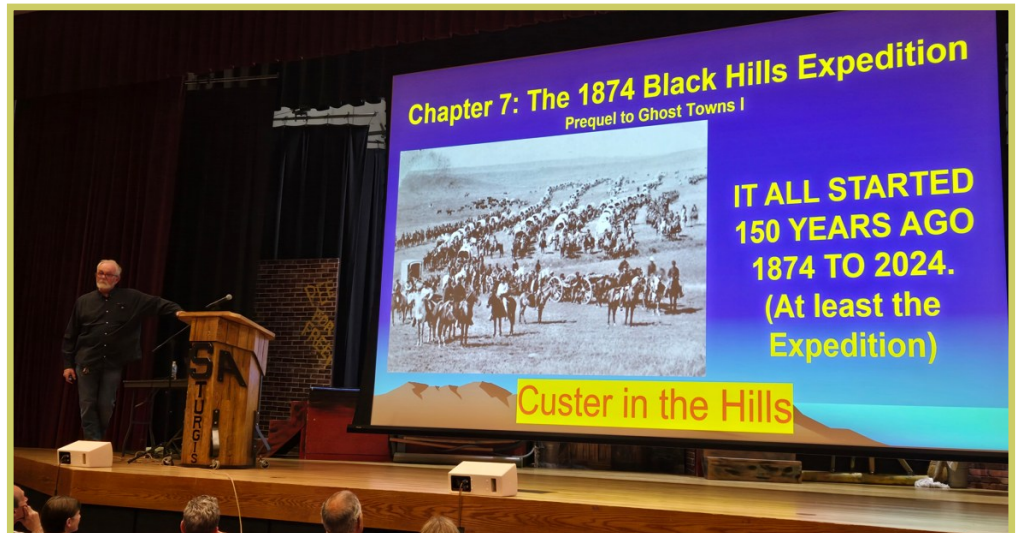
History Day 2025: June 7, Archaeology of the Sturgis and Meade County Area	1-2
Hull's Frozen Foods Mirror Donated	3
Historic House Plaques	3
Map Donated	4
Meade County Properties on the National Register of Historic Places	5-7
Display Case of Miller Bottles Installed at Erskine Building	8- 10
President's Message	11
Calendar of Events	11

History Day June 7, 2025: Archaeology of the Sturgis and Meade County Area ... Logan Lamphere

Sturgis & Meade County History Day will once again be held Saturday, June 7, from 9:00 a.m. to 4:00 p.m. at the Sturgis Community Center.

They will present at 11:00 a.m. in the Community Center Theater.

A second talk will be presented at 1:00 p.m. by Katie Lamie from the South Dakota State Archaeological Research Center from



Bill Swanson gave a presentation on the 1874 Custer Expedition at History Day 2024.
(Photo by Logan Lamphere)

HISTORY DAY 2025

**"ARCHAEOLOGY OF
THE STURGIS &
MEADE COUNTY
AREA"**

*Saturday,
June 7, 9am-4pm,
Sturgis
Community Center*

**Edited by
Logan Lamphere**

The theme this year is "Archaeology of the Sturgis and Meade County Area."

Keynote speakers will give presentations in the Sturgis Community Center Theater.

This year's speakers include students from the University of South Dakota, along with Dr. Tony Krus from USD, on archaeological techniques used at the "Soap Suds Row" dig near Fort Meade.

Rapid City. She will present, "Taking One for the Road: An 1878 Bottle Dump Between Grasshopper Jim's Scooptown and Camp Sturgis."

Booths displaying local history and related organizations will be in the Community Center theater lobby and main lobby.

The Meade Room will be used for overflow booths, re-

continued on next page

History Day 2025 (cont'd)

freshments, and a place for attendees to mingle and talk about the speakers after the presentations.



A booth from Community Education of the Black Hills at History Day 2024 (Photo by Logan Lamphere)

During the first two weeks of June, the Bear Butte Creek Historic Preserve will once again be conducting archaeological digs at Soap Suds Row near Fort Meade, with students and professors from USD and Augustana.

A tour of the Soap Suds Row dig site at the Bear Butte Creek Historic Preserve will be given from 2:30-3:30 that Saturday, but visitors are welcome at any time during the two-week dig, which usually runs from about 9am-4pm each day.

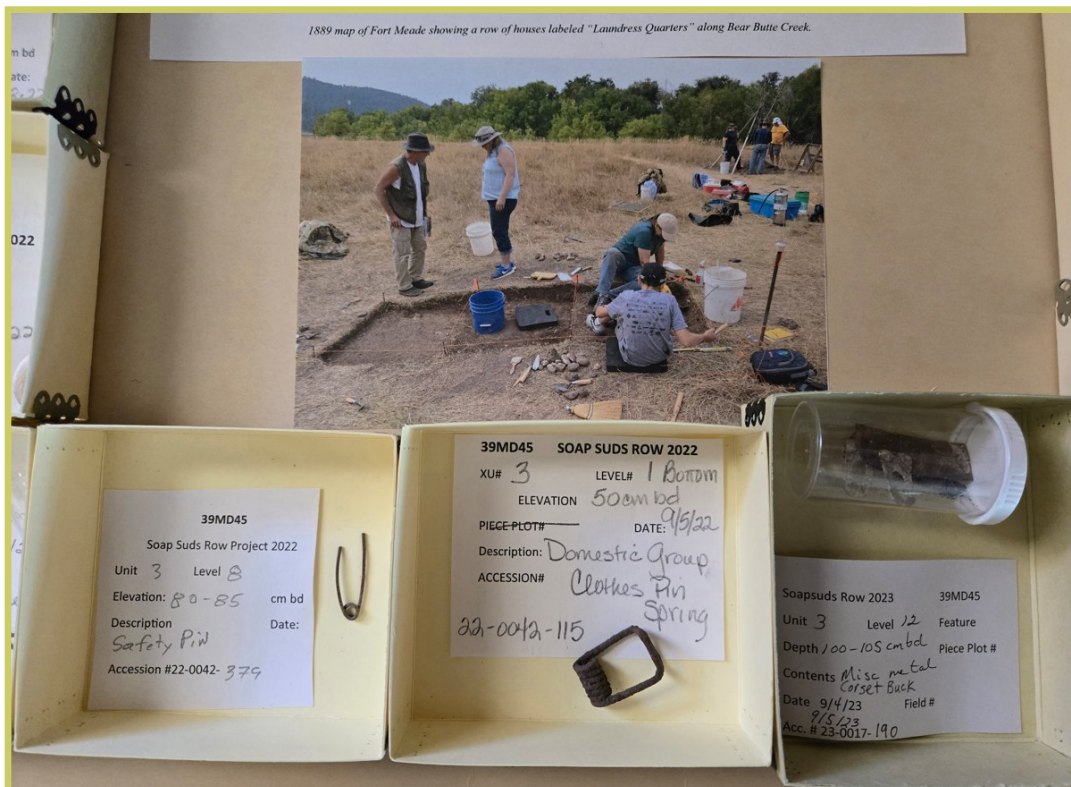
Visitors can also see the temporary laboratory set up at the Lamphere Ranch Campground during the two-week dig.

If you would be interested in setting up a booth or being part of a presentation, please contact Jim Holland at jbholland74@gmail.com or 605-484-7063.



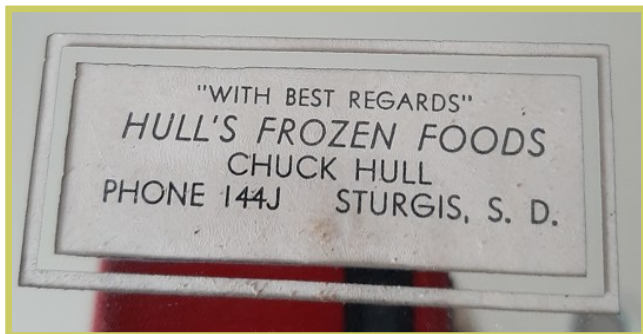
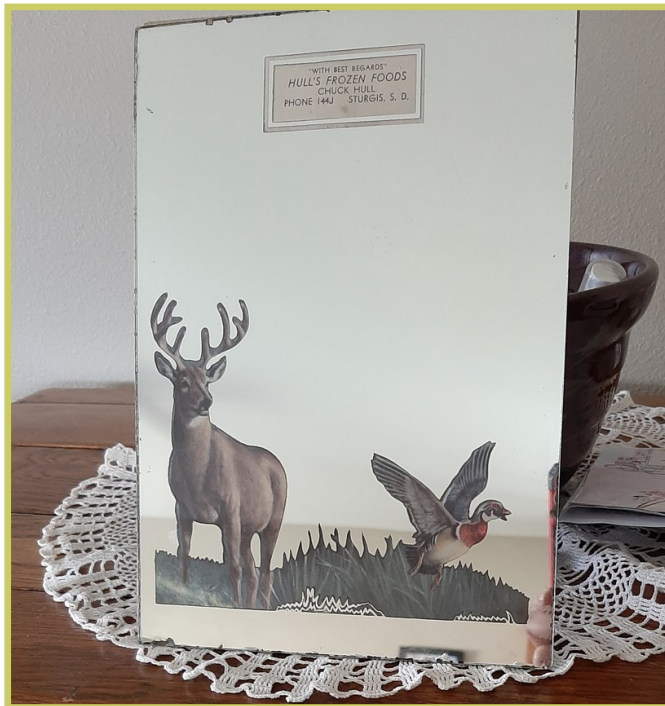
USD students at the 2024 Soap Suds Row dig at the Bear Butte Creek Historic Preserve (Photo by Logan Lamphere)

A display case of Soap Suds Row archaeology findings at History Day 2024 (Photo by Logan Lamphere)



Hull's Frozen Foods Mirror Donated

Board Member Janice Lundgren received a donation from Connie Richards from Iowa. Her mother passed away ten years ago and had the mirror with promotional info pictured below. She wanted to get it to the Hull Family or give it to us since it was from Sturgis.



Board Member Lee Stroschine did some research and found the following: "Charles Alexander Hull was born in Nebraska in 1900. He was married three times and is buried at Black Hills National Cemetery. He is listed in the 1950 census living on Junction Avenue in Sturgis with an occupation of Wholesale Distributor Frozen Foods. There is no record of him in any of the phonebooks the library has from the 1940s, 1950s or 1960s."

If you have any information, please let us know!

Historic House Plaques *...Logan Lamphere*

The Sturgis & Meade County Historical Society has been working on a new project to encourage property owners in Sturgis to install "Year-Built" plaques on buildings 100 years old or older.



The project is modeled after ones seen in other towns and cities. The benefits of such a project could include the following:

- ◇ To raise awareness of historic structures in Sturgis
- ◇ To pique the interest of residents and visitors regarding the history of Sturgis
- ◇ To encourage other forms of historic preservation

The Society is in the process of selecting a uniform plaque style and source from where plaques can be purchased, hopefully within Sturgis.

Using Meade County records, the Society has identified over 350 houses and commercial buildings that were built between 1884 (the oldest recorded) through 1925 (100 years ago). A list of these buildings and their owners is available to assist in determining which properties qualify for the plaques.

Each year, about a dozen more buildings will turn 100 years old, becoming eligible for the plaque. The Society estimates the cost of a plaque to be about \$75. More information will be available at History Day on June 7.

A pre-order form will be available at History Day. We look forward to recognizing Historic Sturgis!

Map Donated to Historical Society

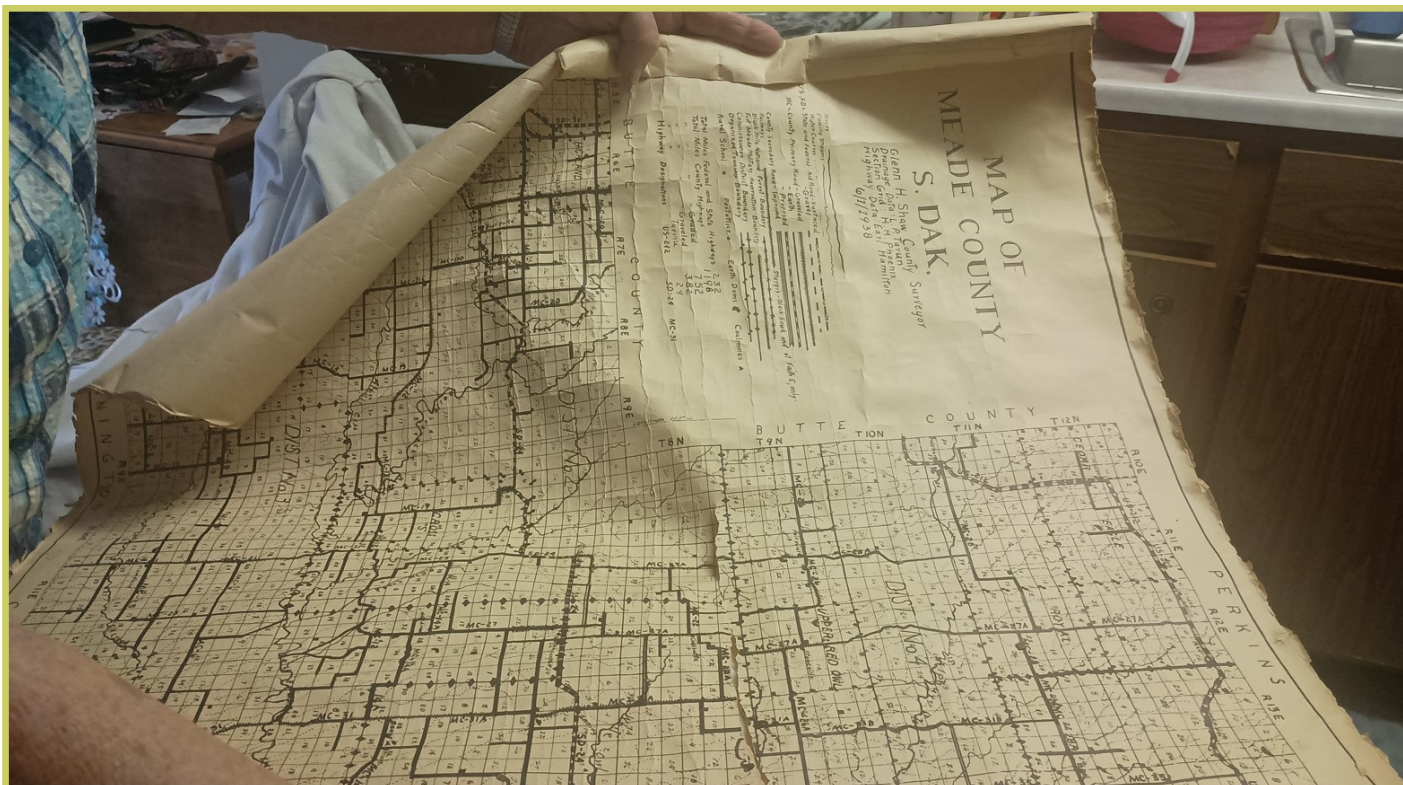
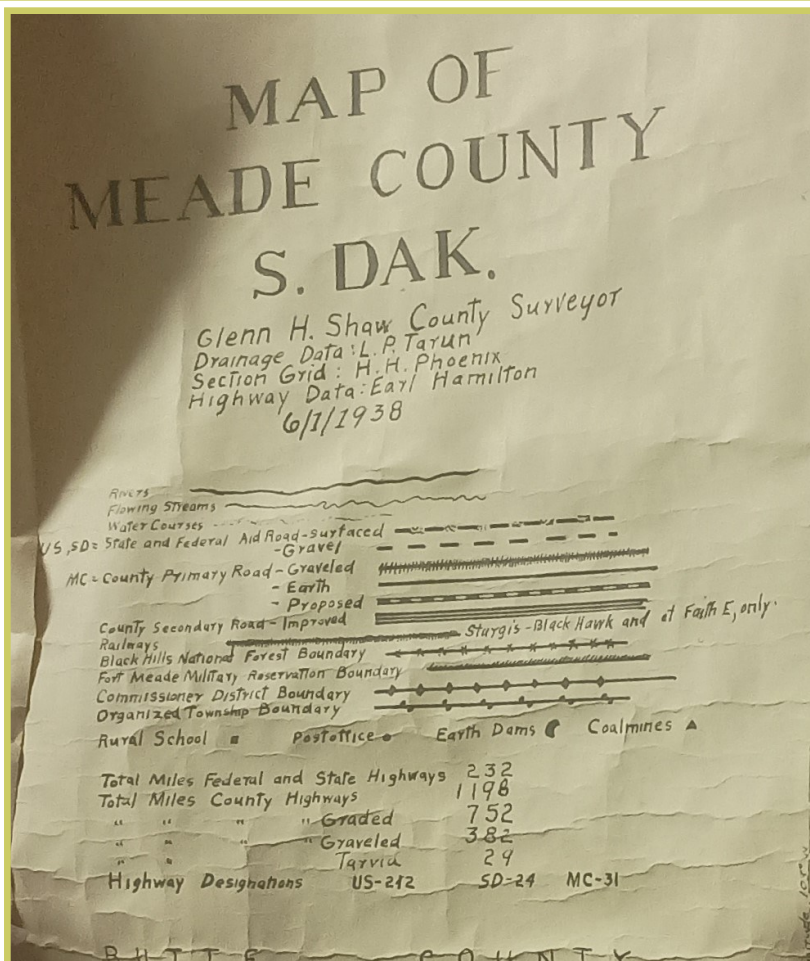
A Meade County map dated June 1, 1938, was recently donated to the Sturgis & Meade County Historical Society by a friend of a board member Richard Moeller. Glenn H. Shaw was the county surveyor listed on the map.

The Society is looking into repairing and framing the map, and hanging it in the Erskine Building.

Meade County currently allows us to house many of our donations in the former Primary Elementary School building next to the restored Erskine Building. Display cases have also been installed in the Erskine Building.

We are still searching for a permanent home that can serve as a repository for such information and artifacts, but can also be a place to meet, conduct research, and install display cases with interpretive information for the public.

If you have items or documents you would like to donate to the Historical Society, please let us know!



Meade County Properties on the National Register of Historic Places

... Logan Lamphere

The National Register of Historic Places is the official list of the Nation's historic places worthy of preservation. In Meade County, 32 properties have been listed on the National Register.

Begun in 1966, the National Register of Historic Places is a “national program to coordinate and support public and private efforts to identify, evaluate, and protect America's historic and archeological resources,” according to the [South Dakota State Historical Society](#). Each state administers the program.

continued on next page

Property Name	City	Street & Number	Name of Multiple Property Listing; Other Names	Area of Significance
Archeological Site No. 39MD81	Sturgis	Address Restricted	Prehistoric Rock Art of South Dakota MPS	PREHISTORIC; NATIVE AMERICAN
Archeological Site No. 39MD82	Sturgis	Address Restricted	Prehistoric Rock Art of South Dakota MPS	PREHISTORIC; NATIVE AMERICAN
Bear Butte	Sturgis	NE of Sturgis	Mato Paha; Nowahawus	NATIVE AMERICAN
Black Hills National Cemetery	Sturgis	20901 Pleasant Valley Dr.	Fort Meade National Cemetery	POLITICS/GOVERNMENT; MILITARY
Erskine School	Sturgis	Sherman St.		EDUCATION; ARCHITECTURE
Fort Meade District	Sturgis	E of Sturgis on SD 34	Fort Meade Reservation	MILITARY; ARCHITECTURE
Graf, Stephen and Maria, House	Sturgis	1233 Main St.		ARCHITECTURE
McMillan, John and Elsie, House	Sturgis	1611 Davenport St.	Jack and Annie Hale House	ARCHITECTURE
Raskob, Jacob and Elizabeth, Ranch	Sturgis	SD Hwy 34	Rural Butte and Meade Counties MRA	EXPLORATION/SETTLEMENT; ARCHITECTURE
South Dakota Dept. of Transportation Bridge No. 47-151-389	Sturgis	Local road over Bear Butte Creek	Historic Bridges in South Dakota MPS	ENGINEERING
Sturgis Commercial Block	Sturgis	1000--1028 Main St.		COMMERCE; ARCHITECTURE
Sturgis High School	Sturgis	1425 Cedar St.	Schools in South Dakota MPS; Williams Middle School	EDUCATION; ARCHITECTURE
Sturgis Water Works Company Supply Works Site	Sturgis	2835 Davenport St.	Davenport Family Summer Home	COMMERCE; ENTERTAINMENT/RECREATION; INDUSTRY
Tallent, Annie, House	Sturgis	1603 Main St.		EXPLORATION/SETTLEMENT; ARCHITECTURE
Wenke, John G., House	Sturgis	1340 Junction Ave.	The Beug Home	COMMERCE; ARCHITECTURE

There are 15 places with a Sturgis address on the National Register of Historic Places.

National Register of Historic Places (cont'd)

What does being on the Register actually mean? There are a few benefits, but not really any restrictions or protections. Mostly, being on the Register is a matter of pride, awareness and public education. It does not impose any obligations on the property owner. The hope is that being on the National Register of Historic Places will encourage historic preservation. Another benefit of being on the Register is that some types of rehabilitation can be eligible for a 20% federal income tax credit.

Fifteen, or about half of the NRHP properties in Meade County are in Sturgis. Another seven are in the southwest Meade County area from Sturgis to Black Hawk. The remaining ten are spread throughout rural Meade County and Faith.

Property Name	City	Street & Number	Name of Multiple Property Listing; Other Names	Area of Significance
Black Hawk Elementary	Black Hawk	Main and Elm	Rural Butte and Meade Counties	ARCHITECTURE
Johnson, Ole and Carris, Ranch	Black Hawk	CR 7	Rural Butte and Meade Counties MRA	EUROPEAN; EXPLORATION/SETTLEMENT; ARCHITECTURE
Fort Meade Veterans Administration Hospital	Fort Meade	113 Comanche Rd.	United States Third Generation Veterans Hospitals, 1946-1958 MPS	ARCHITECTURE; HEALTH/MEDICINE; MILITARY
Covered Wagon Resort	Piedmont	14189 Cty. Rd. 79	Covered Wagon Motel; Wagon Wheel Resort	ENTERTAINMENT/RECREATION
Evans, John and Coralin, Ranch	Piedmont	CR 4	Rural Butte and Meade Counties MRA	EXPLORATION/SETTLEMENT; ARCHITECTURE
Stevens Ranch	Piedmont	CR 4	Rural Butte and Meade Counties MRA	EXPLORATION/SETTLEMENT; ARCHITECTURE
Archeological Site No. 39MD20	Tilford	Address Restricted	Prehistoric Rock Art of South Dakota MPS	PREHISTORIC; NATIVE AMERICAN

Two places Meade County on the National Register of Historic Places are in Black Hawk, one is Fort Meade, three are in Piedmont and one has a Tilford address.

The places are categorized into “areas of significance,” which include architecture, commerce, community planning and development, economics, education, engineering, entertainment/recreation, European, exploration/settlement, health/medicine, historic - non-aboriginal, industry, military, Native American, politics/government, prehistoric, social history, and transportation. Important archaeological sites often have restricted addresses, to prevent looting or vandalism.

Of note, the Poker Alice Tubbs residence was added to the National Register on June 5, 1975, but was later removed because the house was moved from its original location just north of Bear Butte Creek on the east side of Junction Avenue, to its current location at 1802 Junction Avenue at the Sturgis Motel. According to the *South Dakota Guidelines for Complying with Federal and State Preservation Laws* from the State Historic Preservation Office of the South Dakota State Historical Society, “Moving the Poker Alice House from a rural location in Meade County to Sturgis, South Dakota, adversely affected the house’s integrity of location, setting, and feeling.”

There are also three Meade County properties in Sturgis that are on the South Dakota Register of Historic Places. These include the Stagebarn Stage Station Well at 13364 Sturgis Rd., Piedmont, added June 30, 2011; Sturgis City Auditorium at 1019 Main St., added February 1993; and William Holst Farmstead in the Vale vicinity, added March 1983.

continued on next page

National Register of Historic Places (cont'd)

Property Name	City	Street & Number	Name of Multiple Property Listing; Other Names	Area of Significance
Frozenman Stage Station, 39MD368	Bison	Address Restricted	South Dakota Portion of the Bismarck to Deadwood Trail MPS	HISTORIC - NON-ABORIGINAL; TRANSPORTATION
Stomprude Trail Ruts	Bison	Address Restricted	South Dakota Portion of the Bismarck to Deadwood Trail MPS	HISTORIC - NON-ABORIGINAL; TRANSPORTATION
Olsen, Elias B., Ranch	Elm Springs	CR 6	Rural Butte and Meade Counties MRA	EXPLORATION/SETTLEMENT; ARCHITECTURE
Bethel Lutheran Church	Faith	Main and Fifth Streets	Rural Butte and Meade Counties MRA	EUROPEAN; ARCHITECTURE
Minneapolis Brewing Company Beer Warehouse	Faith	US Hwy 212	Faith Beer Warehouse	ARCHITECTURE; COMMERCE
Municipal Building-City Hall	Faith	206 Main St.	Federal Relief Construction in South Dakota MPS	SOCIAL HISTORY; ECONOMICS; ARCHITECTURE; COMMERCE; COMMUNITY PLANNING AND DEVELOPMENT; POLITICS/GOVERNMENT
Baker, Joseph, House	Hereford	CR 19A	Rural Butte and Meade Counties MRA	EXPLORATION/SETTLEMENT; ARCHITECTURE
H O Ranch Log House	Marcus	3 mi. W of Marcus	N Double S Ranch Log House; Richardson Log House	EXPLORATION/SETTLEMENT
Royal Center School	Opal	Northwest corner of intersection of Sulphur Cutoff and Stoneville Roads	Schools in South Dakota MPS	EDUCATION; ARCHITECTURE
Bartlett, L. L., House	Stoneville	CR 26	Rural Butte and Meade Counties MRA	ARCHITECTURE

There are ten places in rural Meade County on the National Register of Historic Places.

Property Name	City	Street & Number	Date Added
Stagebarn Stage Station Well	Piedmont	13364 Sturgis Rd	June 30, 2011
Sturgis City Auditorium	Sturgis	1019 Main St	February 1993
William Holst Farmstead	Vale vicinity		March 1983

There are three Meade County places on the South Dakota State Register of Historic Places, including one each in Sturgis, Piedmont and near Vale.

Display Case of Miller Bottles Installed at Erskine Building

... *Logan Lamphere*

A display case featuring a sampling of Ernie Miller's bottle collection has been installed in the Meade County Erskine Office Building. The display is on the first floor across from the main reception counter, and will be on display for the next year. The plan is to change them out annually.



The estate of Ernie Miller, who was a long-time resident and local historian of Sturgis, donated his bottle collection to the Sturgis & Meade County Historical Society.

Miller (February 23, 1924 - December 3, 2022) collected many artifacts, particularly glass bottles, over the years around the Sturgis area. Lynelle (Miller) Chapman and Danny Chapman made the gift in 2023. The Miller estate also donated this beautiful display case for use by the Sturgis & Meade County Historical Society.

As part of the collection, Max Fjelstad of Prairie Emporium has also donated bottles collected by Ernie Miller to the Sturgis & Meade County Historical Society.

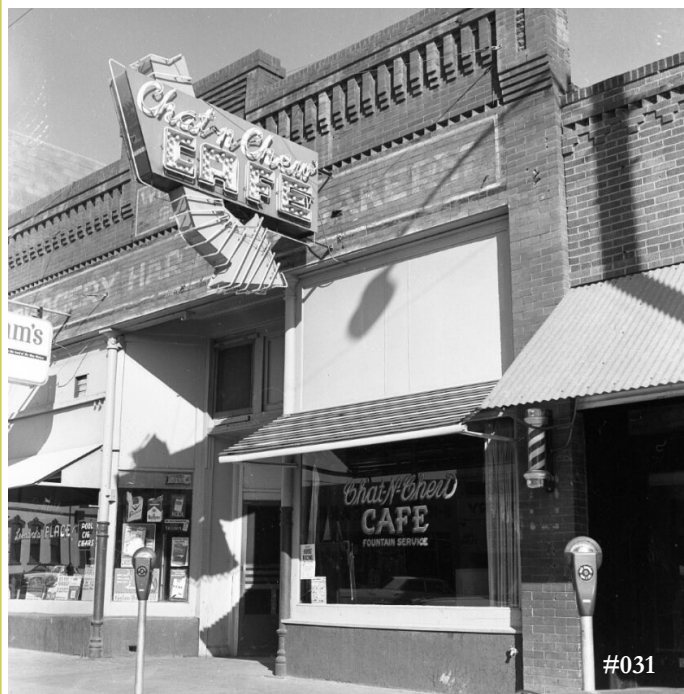
The bottles displayed in this case were assessed and catalogued by Black Hills-area archaeologist Cher Burgess. Burgess was an archaeologist with the U.S. Forest Service, taught physical anthropology at Eastern Wyoming College, and received her M.A. in Anthropology from the University of Wyoming. As of 2025, she was contracted with the Natu-

continued on next page

Help us Identify Bob Lee Photos

The Bob Lee Photo Collection, thousands of photo negatives taken by the late Bob Lee during his many years with the local paper, was generously donated by his wife, Dodi Lee. The photos range, primarily, from the late 1950s through the mid 1970s.

Please help us out! We would love to have any information or memories of these sample photos. Send comments to Mark Rambow at presidentsturgishistory@gmail.com.



Display Case of Miller Bottles at Erskine (cont'd)

ral Resources Consultancy & Service (NRCS).

For each bottle, Cher Burgess recorded basic details, as in this example:

Basics: Miller Collection Number (NO: M-0001)

Front Description: "CHAMBERLAIN'S / COLIC / CHOLERA / AND / DIARRHEA REMEDY

Side 1: CHAMBERLAIN MED. CO.

Side 2: DES MOINES, IA. U.S.A.

Notes: Neck has an oblong small bubble in the glass, the long axis is the bottle height. Marks where the finish tool turned are visible.

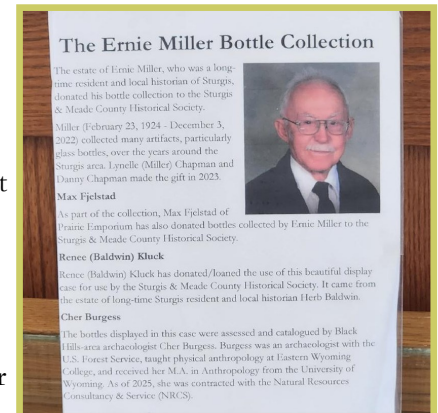
Then she identified each bottle by asking a series of questions:

Name: Chamberlain's	Type: Medicine	Color: Aqua
Height: 4 3/8	Width: 1 3/4	Breadth: 7/8"
Finish type: Ring or Oil	Finish: 5/8" tall	Back: plain, meaning no embossing on panel
Outside finish diameter: 5/8"	Shoulder to finish: 3/4"	
Indented Panels? Yes. Front, back and sides.	Base Profile: Blake Variant 1	Bottom Marks: none, but faint impression of

1. Does the bottle have raised embossing on the base, body, shoulder and/or neck OR a distinct vertical side mold seam visible on the body, shoulder, and/or neck (or both)?
2. Do the vertical side mold seams go up to the highest verti-



A few samples of the Ernie Miller bottle collection that were researched by Cher Burgess have been put on display in an antique display case in the Meade County Erskine Building (Photos by Ross Lamphere)

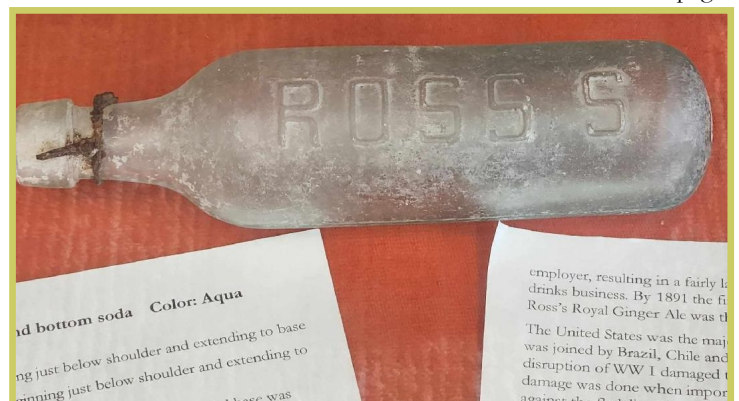
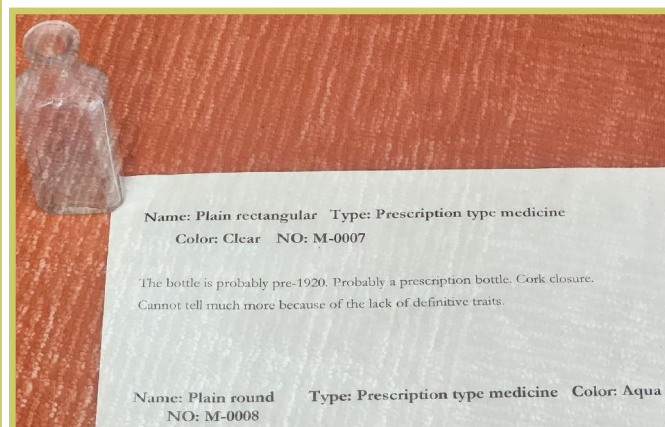


cal point of the finish (aka lip) side and usually onto the finish rim itself AND the topmost surface of the finish (rim) is NOT visibly ground down?

3. Does the base of the bottle have a pontil scar or mark?

4. Is the bottle finish applied or tooled?

continued on
next page



Display Case of Miller Bottles at Erskine (cont'd)



Photos were taken to record size and color.

She then researched the history of the bottle, product, and the company producing the product.

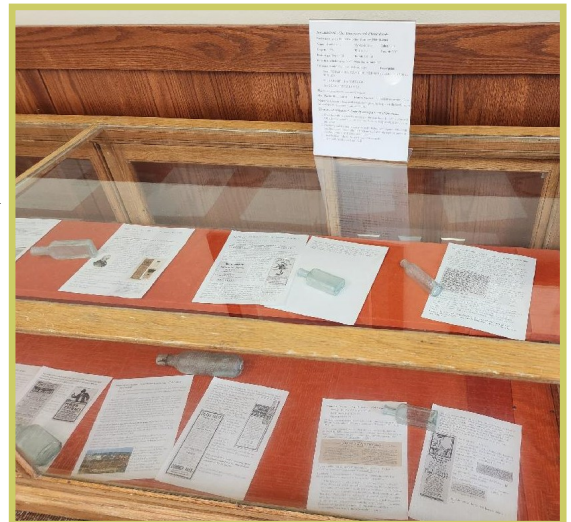
Finally, Burgess searched through Newspapers.com to look for early advertisements of the product in local and regional newspapers.

Logan Lamphere pared down the descriptions for the labels printed for the display case.



The methods used by Cher Burgess in researching the Miller bottles were included in her final report to the Sturgis & Meade County Historical Society, and were printed in a binder left near the display case
(Courtesy Cher Burgess)

A binder with the full descriptions and additional information about the collection and the artifacts on display has also been left next to the display case.



GOOD enough FOR UNCLE SAM

And good enough for you. There is more of Carter's Ink used by the U. S. Government than of all other makes put together. It costs you no more than the poorest ask for it.

Funny booklet "How to Make Ink Pictures" free.
CARTER'S INK CO., Boston, Mass.

Dr. Price's Special Flavoring Extracts—Vanilla, Lemon, Orange, Rose, Nectarine, Almond, etc—for flavoring Ice Cream, Cakes and Pastry. By a new process, Dr. Price extracts from the true select fruits and aromatics each characteristic flavor, and produces flavorings of rare excellence—of great strength and perfect purity.

Message from the President's Desk

...*Mark Rambow*

Summer is here, and that can only mean one thing! It's time for History Day!!

This year's event will highlight some of the important archaeology that has been done recently in the greater Sturgis area.

It will include an active archaeology dig by the University of South Dakota at the historic Soap Suds Row site, across the highway from Fort Meade, where the women who were the laundresses at early Fort Meade worked and lived.

USD staff and students will be doing a presentation, but also giving tours of the active dig site for those who have always been curious about archaeology.

This is the fourth straight year that an active dig will occur at Soap Suds Row, and some very interesting items and theories have already been uncovered!

I hope everyone has a great summer and look forward to seeing you all at History Day on June 7!

Mark Rambow



Calendar of Upcoming Events

Saturday, June 7, 9:00 a.m. to 4:00 p.m. — HISTORY DAY, Sturgis Community Center

11:00 a.m. "Archaeological Techniques Used at the "Soap Suds Row" Dig Near Fort Meade," by University of South Dakota students and Dr. Tony Krus

1:00 p.m. "Taking One for the Road: An 1878 Bottle Dump Between Grasshopper Jim's Scooptown and Camp Sturgis" by Katie Lamie from the South Dakota State Archaeological Research Center from Rapid City.

Tuesday, June 17, 6:30 p.m. — MONTHLY BOARD MEETING

Zoom/Sturgis Area Chamber of Commerce

Tuesday, July 15, 6:30 p.m. — MONTHLY BOARD MEETING

Zoom/Sturgis Area Chamber of Commerce

Saturday, August 23, LIVING HISTORY AT FORT MEADE, Parade Grounds

Saturday, September 6, 1:00 p.m. — GENEALOGY WORK GROUP, Sturgis Public Library

Tuesday, September 16, 6:30 p.m. — MONTHLY BOARD MEETING

Zoom/Sturgis Area Chamber of Commerce

Wednesday—Friday, October 1-3 — WEST RIVER HISTORY CONFERENCE "Deadwood: LIVING the PAST!", Deadwood

Friday, October 17, 1:00 p.m. — HISTORY AT HIGH NOON, "What's in the Names? For Wood Place and Besant Park Road – Stagecoaches and Trains" by Nancy Davis, Sturgis Public Library

STURGIS & MEADE COUNTY HISTORICAL SOCIETY

P. O. Box 221, Sturgis, SD 57785



Board Officers

Mark Rambow, President,
presidentsturgishistory@gmail.com

Ross Lamphere, Vice President

Jim Holland, Secretary

Janice Lundgren, Treasurer

Joan Bachmeier, Historian

On Line

Website:

www.sturgishistory.org

YouTube:

youtube.com/@sturgishistory

Instagram:

instagram.com/sturgishistory

Facebook:

www.facebook.com/sturgishistory.org

OUR SPONSORS

City of Sturgis

Oasis Bar & Fireside Lounge

KBHB Radio

The HomeSlice Group

Meade County Commission

THANK YOU!

Sturgis & Meade County Historical Society

P. O. Box 221

Sturgis, SD 57785

"History is who we are and why we are the way we are."

—David McCullough